



START
YOUR
LEGACY ▶



NELSON COLLEGE
TE KURA TAMATĀNE O WHAKATŪ

Pietas

MANAAKI | CARE

Probitas

PONO | INTEGRITY

Sapienta

KAIRANGI | SUCCESS

NGĀ POU

CONTENTS

- ▶ WELCOME
- ▶ NELSON - YOUR NEW HOME
- ▶ ACADEMIC
- ▶ EXTRA CURRICULAR
- ▶ OUTDOOR EDUCATION
- ▶ ACCOMMODATION
- ▶ STUDENT SUPPORT & WELLBEING
- ▶ NELSON COLLEGE FOR GIRLS



WELCOME

NAU MAI, HAERE MAI

Founded in 1856, Nelson College is the oldest state secondary school in New Zealand.

The school currently has a roll of approximately 1000 boys. The College is one of Nelson City's prominent landmarks set amongst picturesque grounds, with extensive facilities for learning, sport, leisure and performing arts.

The school has had many famous alumni pass through its halls. The most recognised would be Sir Ernest Rutherford. Rutherford received the Nobel Prize in 1908 for his investigation into the disintegration of the elements, and the chemistry of radioactive substances. Other world renowned Old Boys include New Zealand Prime Ministers, Sir Wallace Rowling and Sir Geoffrey Palmer.

Our single-sex environment focuses on the wellbeing and advancement of boys and young men, where we encourage strong friendships and positive masculinity. With a balanced mix of male and female teachers who understand boyhood's complexities, our students thrive.

We are known as a cradle of sporting excellence, and our sports academies provide high-performance training for regional and national competitions. The arts, including itinerant music lessons, are increasingly popular, and our thriving co-curricular programme offers a variety of activities, ensuring every student finds their niche.



NELSON

WHAKATU

A PLACE TO
GROW, LEARN
AND EXPLORE

Nelson is a charming city of around 50,000 people, located at the top of the South Island of New Zealand. Known for its stunning natural beauty, and vibrant arts scene, Nelson offers a unique blend of urban and rural experiences.

With some of the highest sunshine hours in New Zealand, Nelson's mild, sunny climate features warm summers and mild winters, ideal for year-round outdoor activities.

Approx Flight Times to
Nelson:

Auckland 1h 30m

Wellington 45 m

Christchurch 55m





YOUR NEW HOME



The economy is diverse, with key industries including horticulture, fishing, tourism, and arts and crafts. The region is renowned for its vineyards, orchards, and seafood.

Often called the 'Creative Arts Capital' of New Zealand, Nelson boasts a vibrant arts community with numerous galleries, studios, and craft markets. The annual Nelson Arts Festival showcases local and international talent.

Nelson's natural surroundings offer numerous outdoor activities, with convenient access to beaches, soaring mountains, alpine lakes, pristine rivers, and national parks. Popular activities include:

Beaches: Tahunanui Beach for swimming, sunbathing, and water sports.

National Parks: the Abel Tasman, Kahurangi, and Nelson Lakes National Parks are all within 1hr 30mins drive and are perfect for kayaking, hiking, and wildlife spotting.

Mountain Biking and Cycling: the Great Taste Trail runs out from the city and into the local countryside and there are multiple mountain biking parks a short distance away.

Fishing and Boating: there are excellent opportunities on the region's rivers, lakes, and coastline.

The city centre is just a 10-minute walk from Nelson College, making it convenient for students and visitors.



ACADEMIC MARAUTANGA

CURRICULUM

Nelson College has a tradition of academic excellence and is recognised throughout New Zealand as a leader in boys education, both in and out of the classroom.

The school offers a wide curriculum selection for students to gain credits towards the New Zealand high school qualification which is called the National Certificate of Educational Achievement (NCEA). We offer students an exciting opportunity to learn at a progressive boys' school. There are many courses with a strong academic focus, as well as arts, drama, music and cultural co-curricular activities.

QUALIFICATIONS AND PATHWAYS

International students are able to use their NCEA qualifications to gain equivalency in their home country, stay in New Zealand to apply for tertiary study or transfer to another English-speaking country.

In the past few years students have gained entrance to universities in Australia, Canada, the United Kingdom and Singapore with their New Zealand results obtained at Nelson College.

The school can also assist with other English Language proficiency tests such as IELTS and SAT. We have easy access to local testing centres and can help to provide private tuition to study towards these examinations if necessary.

INNOVATION

Nelson College offers full academic and vocational pathways to students.

Over the last few years, the college has successfully invested money into developing innovative programmes and facilities to care for the needs of every student.

The college has a Trade Centre on-site and offers trade-related courses in: Automotive Engineering, Building and Construction, Engineering and Light Fabrication, Food and Hospitality, Basic Joinery and Carpentry.

For high performance athletes we also offer specialist sport development programmes such as our Rugby Extension class. These programmes run within our timetable and are option subjects for students.



EXTRA CURRICULAR

MAHI KURA ĀPITI

SPORT AND RECREATION

HĀKINAKINA

New Zealand education allows for ample opportunity to follow leisure pursuits. We have a well-resourced sports programme that provides all students with the opportunity to participate, develop, perform and excel in their chosen field.

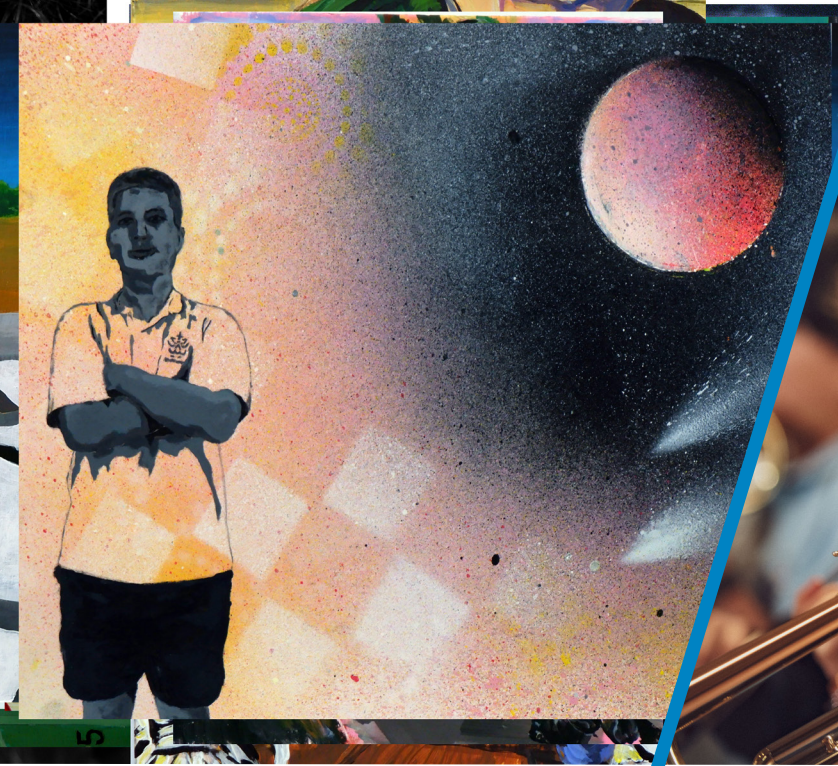
The college has extensive sports facilities, including two gymnasiums, a swimming pool, multiple sports fields and the opportunity to engage in over 30 different sporting codes.

A number of sports are delivered at school, while others are offered in conjunction with local clubs.

Our students compete in a range of competitions and tournaments locally, regionally and nationally. Our senior teams have an excellent record at all levels in New Zealand. In recent years we have produced many professional sportsmen in a variety of sports including; basketball, volleyball, football, cricket and rugby. The college is proud of this as it is a great credit to our development programmes.

Each year we have several sports exchanges with partner schools including; Marlborough Boys College, Shirley Boys College and an annual boarding tour down the West Coast of the South Island to visit Grey High School.





ARTS AND CULTURE

NGĀ TOI

Participation and excellence in all areas of the Arts is encouraged with subjects offered from Year 9 through to Year 13.

For musicians we have a full music suite where students can practice and take lessons in their chosen discipline. Students have the opportunity to enrol in itinerant music lessons which happen during school hours. We also have a relationship with the Nelson Centre of Musical Arts and are able to access their programmes, the Centre is a short walk away from our campus in the city. For group performance there are choir, jazz and concert bands as well as opportunities to create and perform in small group ensembles in the Rockquest competition.

Our drama programme provides opportunities to perform in local theatre sport competitions and large scale productions. We collaborate with our sister school, Nelson College for Girls, to be able to offer students opportunities on the stage.

Our visual arts faculty offers students courses in Painting, Photography and Graphic Design. This faculty regularly helps students produce work of high quality which is shown by their excellent academic record in NCEA and Scholarship.

We celebrate the achievements of our students in our Art Showcase event which is held towards the end of academic year. This gives the students chance to perform and present their folio work to their parents, peers and the community in an exhibition.

OUTDOOR EDUCATION

AKORANGA TŪ-Ā-NUKU

Outdoor Education provides students with excellent opportunities to grow holistically, including personal and social development, as well as opportunities for learning new skills and leadership.

The college is proud to own and maintain its own Outdoor Education Centre called Matakītiki Lodge. This property is on the border of Nelson Lakes National Park near Murchison, 120 kilometres south of Nelson. All our year 10 classes enjoy a week-long adventure camp in our pristine environment learning about the outdoors.

As part of our curriculum, students can choose Outdoor Education in year 11, 12 and 13. In these classes' students learn and practice the skills of navigation, bushcraft, tramping, mountain expeditions, kayaking, rock climbing and mountain biking. Each week students go on a short expedition based at school to practise their skills which leads into to a longer multi-day camp out in the wilderness.

Nelson is surrounded by three National Parks; Abel Tasman, Nelson Lakes and Kahurangi and so students have a fantastic natural environment in which to practise their outdoor skills.





ACCOMMODATION

WHARENOHO

BOARDING

TE KURA NOHO

Nelson College has two recently renovated historic boarding houses located on school grounds. Originally built in 1929, these houses boast modern and comfortable facilities.

Each house can host up to 65 students and is staffed by a Housemaster, a Matron, and support tutors who help to supervise and care for the students. Academic tutors assist students with personal study, assignments and examination preparation. Meals are taken in the dining room, three times a day, seven days a week.

The school is located 10 minutes walk away from the city allowing boarding students easy access to all their shopping and entertainment needs.

HOMESTAY

WHARENOHO RIHI

Nelson College also offers homestay accommodation. Students have the option of living with a local New Zealand family in their home, close to the college. This is a great way to experience family life in a different culture.

Our dedicated Homestay Coordinator takes care of the vetting, conducts home visits and provides a liaison for everyone involved to help make the process straightforward and rewarding for all.







WHERE
YOUNG MEN MATURE
AND THRIVE

STUDENT SUPPORT AND WELL-BEING

HAUORA

Nelson College is a signatory to the Education (Pastoral Care of Tertiary and International Learners) Code of Practice 2021.

We provide extensive pastoral support for international students. The school has an on-site sick bay, and we have immediate access to the regional hospital directly across the road from the college. All students are enrolled at a GP (General Practitioner) practice on arrival.

Students are welcome to use our International Centre before school, between classes, during breaks and after school. It provides students with a quiet space where they can get advice and guidance from staff, relax, or study.

Our international orientation programme helps students get the best start to their experience at school. Prior to arrival, students will receive pre-departure information about student life at Nelson College, the city of Nelson and general day-to-day living in New Zealand.

On the first day of school, the student is officially welcomed, and they complete a familiarisation tour around the campus.

Through the school, we provide one-to-one, confidential counselling and support through social workers. We also employ two Learning Support Co-ordinators who work with students, their families, and teachers to support students with any learning differences or needs. These staff are supported by a wider team of Teacher Aides who work with students in the classroom.

We encourage our students to respect themselves and others through service to the community. A strong connection is important to our college, and we serve the community through many initiatives such as running charity events, leading college social activities, environmental causes and volunteering.

NELSON COLLEGE FOR GIRLS

WHANAUNGATANGA



LEARNING APART, AND TOGETHER

Nelson College has a close relationship with Nelson College for Girls. The two colleges are five minutes walk apart and share a similar history.

The two schools enjoy and celebrate their single-sex academic structure but come together to provide joint extracurricular opportunities in the Arts. This includes joint music ensembles such as Jazz and Concert bands, drama performances and our combined Kapa Haka group 'Ngā Aho Rau'.





NELSON COLLEGE

TE KURA TAMATĀNE O WHAKATŪ

ENQUIRIES

Ph: +64 3 548-3099

Email: international@nelson.school.nz

Postal Address:

Private Bag 16, Nelson 7040
New Zealand

Physical Address:

67 Waimea Road, Nelson 7010
New Zealand

nelson.school.nz



START YOUR LEGACY